



## Prince of Peace Episcopal Church in the Diocese of Bethlehem

420 Main Street Dallas, Pennsylvania 18612 (570) 675-1723  
[princeofpeace@epix.net](mailto:princeofpeace@epix.net) [www.princeofpeaceallaspa.org](http://www.princeofpeaceallaspa.org)

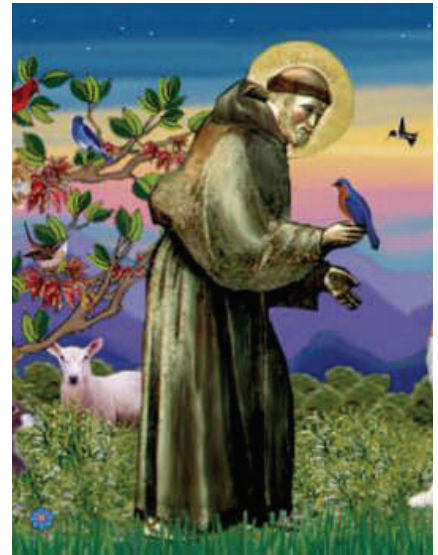
The Right Reverend Paul V Marshall, Bishop  
The Rev. James Stevenson, Priest-In-Charge  
The Reverend John S Prater, Rector Emeritus

### BLESSING OF THE ANIMALS—OCTOBER 4, 7:00 PM

Each year in early October a day is set aside to remember Saint Francis of Assisi who was a Roman Catholic friar and the founder of the Franciscans. He is known as the patron saint of animals, birds and the environment. In honor of St Francis it is our custom to hold 'The Blessing of the Animals'. The Blessing of the Animals is a brief prayer service which includes a blessing for each individual pet. We originally incorporated this into our Sunday service, however a few years ago we decided to hold this service on the day set aside to honor St. Francis, October 4.

All properly restrained pets are welcomed at this service which will be held in the church yard. We encourage you to join us and to invite your friends and family to bring their pets.

The service will be held rain or shine, and will be moved into the Parish Hall, if necessary.



### GIVING IN GRATITUDE

*Every good gift is from above, and comes from the Father. (James 1:17)*

Our annual parish stewardship campaign will be kicking off on Sunday October 12. Please give prayerful consideration to your commitment of support through your time, talent, and treasure.

We are faced with many challenges as we look towards 2009, most especially our searches for new Rector and new Organist. Your pledge will allow us to budget and plan accordingly.

Personalized Pledge Cards will be distributed at both services on October 12 and mailed to those who are not present. For your convenience, you may place your card in the Offertory Plate OR mail it in to the church. We would like to have all cards on or by October 26 to be offered in gratitude to the Lord.

### ARTSYTEA

**Saturday, October 25**

Enjoy tea and sandwiches while viewing the work of several local artists.

All art will be available for purchase with a portion of the sale price benefiting the church. Tickets are \$7.50 per person and are now available.

For more information or to purchase tickets contact the Church Office (675-1723 or [princeofpeace@epix.net](mailto:princeofpeace@epix.net))

The Episcopal Church strives to live by the message of Christ, in which there are no outcasts and all are welcome. Walking a middle way between Roman Catholicism and Protestant traditions, we are a sacramental and worship-oriented church that promotes thoughtful debate about what God is calling us to do and be, as followers of Christ.

## PENN STATE RAFFLE

Raffle tickets are still available for a 'Penn State Basket' which includes 2 tickets to the Penn State vs Indiana Football Game (on November 14) AND fan gear, a \$200 value. Tickets are \$3 each or 2 for \$5. Tell your friends and family!! The winner will be drawn on Sunday October 12 and need not be present to win.

For more information or to purchase tickets contact the Church Office.

Prince of Peace is available in many places on the web. . .

Visit our website [www.princeofpeacedallaspa.org](http://www.princeofpeacedallaspa.org)

Join our Facebook group

Be our Friend on MySpace

Sign up for our ENews

For more information contact Jennifer Martin.

## ANNUAL OBSERVANCE OF THE CHILDREN'S SABBATH—OCTOBER 19, 10:00 AM



Each year in cooperation with the National Children's Defense Fund (CDF) Prince of Peace observes the Children's Sabbath on the third Sunday in October. The Children's Sabbath is an annual, multi-faith holiday that celebrates children as sacred gifts, and provides the opportunity for communities of faith to renew and live out their moral responsibility to care, protect, and advocate for all children. In the past our Youth have served as Layministers and have even lead us in worship. Please join us on October 19 at the 10:00 am service as we, together with thousands of churches, synagogues, mosques and temples across the country, worship and pray for the lives of children and their families.

## ATTENTION VETERANS!

In honor of Veterans Day, our Parish Life Commission is gathering information on our parish's veterans. If you or your loved one is a Veteran , Please forward the following to [lin-darshrader@aol.com](mailto:lin-darshrader@aol.com).

- Vet's name:
- Rank:
- War or Conflict served:
- Years served (19-- to ----)
- Duties/training
- Any special memories you would like to share:

We will be honoring Veterans with a Reception following the 10 am service on Sunday, November 9.

## CHURCH OFFICE HOURS

Jennifer is available in the Church Office on:

Tuesdays & Wednesdays from 9:00 am—2:00 pm

Fridays from 10:00 am—2:00 pm

(Other hours by appointment)

Father Stevenson is in the Office on Tuesdays and/or Fridays. Calling ahead to check his availability is recommended.

**NOTE:** The Church Office will be closed on Friday October 31, but **will** be open on Thursday, October 30.

# October 2008

October 2008						
S	M	T	W	T	F	S
			1	2	3	4
5	6	7	8	9	10	11
12	13	14	15	16	17	18
19	20	21	22	23	24	25
26	27	28	29	30	31	

November 2008						
S	M	T	W	T	F	S
						1
2	3	4	5	6	7	8
9	10	11	12	13	14	15
16	17	18	19	20	21	22
23	24	25	26	27	28	29
30						

Sunday	Monday	Tuesday	Wednesday	Thursday	Friday	Saturday
			October 1	2	3	4
			9:00am - 2:00 pm Church Office		10:00am - 2:00 pm Church Office	7:00pm Blessing of the Animals
5	6	7	8	9	10	11
8:00am Holy Eucharist 10:00am Holy Eucharist 10:00am Church School 12:00pm Whistle Pig Pumpkin Patch 7:00pm Alanon	7:00pm AA (Small Group)	9:00am - 2:00 pm Church Office 6:00pm Finance Commission	9:00am - 2:00 pm Church Office		10:00am - 2:00 pm Church Office 5:30pm Wedding Rehearsal	3:00pm Wedding 7:00pm Alternative Worship (Evening Prayer)
12	13	14	15	16	17	18
Giving in Gratitude 8:00am Holy Eucharist 10:00am Holy Eucharist 10:00am Church School 7:00pm Alanon	9:00am - noon Church Cleaning 7:00pm AA (Small Group)	9:00am - 2:00 pm Church Office 7:00pm Vestry Meeting (Undercroft)	9:00am - 2:00 pm Church Office 10:30am ECW		10:00am - 2:00 pm Church Office	
19	20	21	22	23	24	25
8:00am Holy Eucharist 10:00am Children's Sabbath 7:00pm Alanon	7:00pm AA (Small Group)	9:00am - 2:00 pm Church Office	9:00am - 2:00 pm Church Office	Art Show Set Up	Art Show Set Up 10:00am - 2:00 pm Church Office	1:00pm Art Show & Tea
26	27	28	29	30	31	
Giving in Gratitude 8:00am Holy Eucharist 9:00am Ed. Comm. 10:00am Holy Eucharist 10:00am Church School 11:15am Property 8:00pm Alanon	9:00am - noon Church Cleaning 8:00pm AA (Small Group)	9:00am - 2:00 pm Church Office	9:00am - 2:00 pm Church Office	9:00am - 2:00 pm Church Office Open	Church Office Closed	

# November 2008

November 2008							December 2008						
S	M	T	W	T	F	S	S	M	T	W	T	F	S
						1		1	2	3	4	5	6
2	3	4	5	6	7	8	7	8	9	10	11	12	13
9	10	11	12	13	14	15	14	15	16	17	18	19	20
16	17	18	19	20	21	22	21	22	23	24	25	26	27
23	24	25	26	27	28	29	28	29	30	31			
30													

Sunday	Monday	Tuesday	Wednesday	Thursday	Friday	Saturday
						November 1 Pirate Dinner
2	3	4	5	6	7	8
8:00am Holy Eucharist 10:00am Holy Eucharist 10:00am Church School 7:00pm Alanon	7:00pm AA (Small Group)	9:00am - 2:00 pm Church Office 6:00pm Finance Commission	9:00am - 2:00 pm Church Office		10:00am - 2:00 pm Church Office	7:00pm Alternative Worship (Evensong)
9	10	11	12	13	14	15
8:00am Holy Eucharist 10:00am Holy Eucharist 10:00am Church School 11:15am Veteran's 7:00pm Alanon	9:00am - noon Church Cleaning 7:00pm AA (Small Group)	9:00am - 2:00 pm Church Office 7:00pm Vestry Meeting (Undercroft)	9:00am - 2:00 pm Church Office		10:00am - 2:00 pm Church Office	
16	17	18	19	20	21	22
8:00am Holy Eucharist 10:00am HE/Family Service 11:15am Outreach 7:00pm Alanon	7:00pm AA (Small Group)	9:00am - 2:00 pm Church Office	9:00am - 2:00 pm Church Office 10:30am ECW		10:00am - 2:00 pm Church Office	
23	24	25	26	27	28	29
8:00am Holy Eucharist 9:00am Ed. Comm. 10:00am Holy Eucharist 10:00am Church School 7:00pm Alanon	9:00am - noon Church Cleaning 7:00pm AA (Small Group)	9:00am - 2:00 pm Church Office	9:00am - 2:00 pm Church Office		10:00am - 2:00 pm Church Office	10:00am Tree Trimming & Pageant Practice 1:00pm Gingerbread House Workshop
30						
10:00am Church School 11:15am Property Commission 7:00pm Alanon						

## QUESTIONNAIRE FROM FATHER STEVENSON

Father Stevenson has compiled the following brief questionnaire. You are asked to take your time to think about these questions and to answer them honestly and completely. Please return your completed questionnaire to the office by mailing it, placing it in the collection plate or delivering it to Jennifer. (NOTE: A copy of this questionnaire is also available on our website.)



### Questionnaire

1. The Bible teaches us that God has given each of us least one “talent”, something that we are good at doing and like to do, and that He expects us to put our talents to use for “the spread of His kingdom”.

**Please answer the following question. I am willing to give 1 hour a week putting my talent(s) to use for the good of Prince of Peace Church. Yes \_\_\_ No \_\_\_**

**Please think about the “talent(s)” God has given you and list them below.**

2. Small churches (at least small Episcopal Churches) tend to grow, slowly and surely, when they become known for something they do for the communities in which they exist.

**What would you like to see Prince of Peace become known for doing for the Back Mountain Area?**

3. The Episcopal Church has often been known as “the thinking person’s church”. Yet, while most Episcopal Churches have good “Sunday Schools” for their children, many do not have good adult education programs.

**As an adult member of Prince of Peace I would be willing to support and adult education program (either by helping to lead (teach) such a program or simply by attending on a regular basis if: ( In your answer please lists time(s) that would be best for you and topics that would be of most interest to you.)**

4. Please think about our Sunday morning worship here at Prince of Peace. Please also think about other Episcopal Churches you may have attended. As you think about these things you might very well think about some things we might do to “improve” our Sunday worship here at Prince of Peace—make it more inspirational to you- make it more likely that likely that visitors will want to come back again.

**Please list any and all ideas that come to you.**

5. In addition to Sunday morning services, many churches of all denominations both large and small, have added an additional service on either Saturday or Sunday evening that is somewhat different from the Sunday morning worship. We are beginning such a service here at Prince of Peace at least once a month.

**I think adding such a service is good idea. Yes \_\_\_ No \_\_\_**

**I have some ideas about what these services should be like and am willing to help plan such services. Yes \_\_\_ No \_\_\_**



## Prince of Peace Episcopal Church

420 Main Street  
Dallas, Pennsylvania 18612

Tel: 570-675-1723

E-mail: [princeofpeace@epix.net](mailto:princeofpeace@epix.net)

Website: [www.princeofpeacedallaspa.org](http://www.princeofpeacedallaspa.org)

**Nourish your spirit in the Episcopal Tradition.**

## **Join us for Worship**

**Sunday Mornings**

**8:00 am Holy Eucharist (Quiet Service)**

**10:00 am Holy Eucharist with Music**

**10:00 am Sunday School**